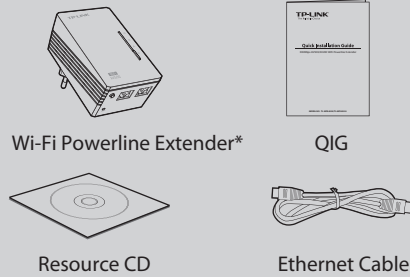


## Quick Installation Guide

300Mbps AV500/AV200 WiFi Powerline Extender

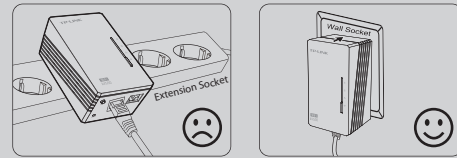
### Package Contents

**Note** This Guide, shared by TL-WPA4220 and TL-WPA2220, uses TL-WPA4220 as an example.



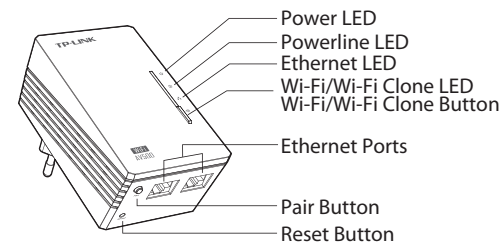
\* The provided power plug may differ from the picture due to different regional power specifications.

### Warning Before Installation



MODEL NO. TL-WPA4220/TL-WPA2220

## LED and Button Description



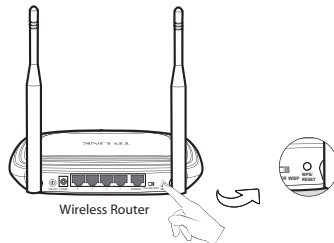
Buttons	Description
Wi-Fi/Wi-Fi Clone Button	Press the button to start Wi-Fi Clone. (For details, see <b>Unify and Extend Wi-Fi Network via Wi-Fi Clone Button.</b> ) Press the button for 5 seconds to enable or disable the wireless function.
Pair Button	Pair button is used to secure a powerline network. (For details, see <b>Pair Button</b> on the next page.)
Reset Button	Press the Reset button for more than 5 seconds, the device will restore to its factory defaults.

LEDs	Status	Description
Power	Solid	The device is on.
	Off	The device is off.
	Blinking	The device is pairing.
Powerline	Solid	The device is connected to a powerline network, but there is no data being transferred.
	Off	The device isn't connected to any powerline network.
Ethernet	Blinking	The device is transferring data.
	Solid	The Ethernet port is connected.
Wi-Fi/Wi-Fi Clone	Off	The Ethernet port isn't connected.
	Off	The wireless function has been disabled.
Wi-Fi/Wi-Fi Clone	Blinking slowly	The extender is cloning Wi-Fi settings from another device.
	Blinking quickly	The wireless function has been enabled.

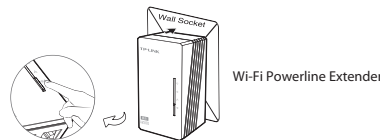
## Unify and Extend Wi-Fi Network via Wi-Fi Clone Button

If you have established a Wi-Fi network with a router supporting WPS, you can unify and extend this current network using the Wi-Fi Clone button. During the Wi-Fi Clone process, the extender will automatically copy the SSID and wireless password of your router, giving you a seamless roaming wireless networking experience. See the steps below to get started.

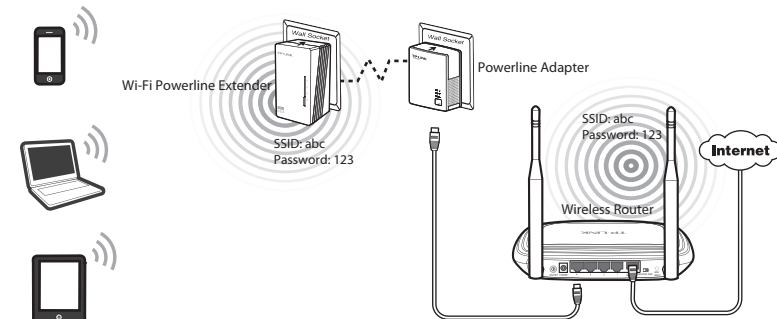
1. Plug in the Wi-Fi Powerline Extender near your wireless router.
2. Press the WPS button on the router.



3. Press the Wi-Fi Clone button on the extender and the Wi-Fi Clone LED will begin blinking slowly. In about 20 seconds, all the LEDs will be solid momentarily and then the Wi-Fi LED will begin blinking quickly, indicating that the Wi-Fi clone process is complete.



4. Connect the Powerline Adapter to the LAN port of the router and plug it into the wall socket.



5. Place the Wi-Fi Powerline Extender in the desired location.

**Note** TP-LINK powerline devices are Plug and Play. A powerline network is established between the powerline adapter and the extender as soon as you plug in the powerline devices.

## Build a New Wi-Fi Network

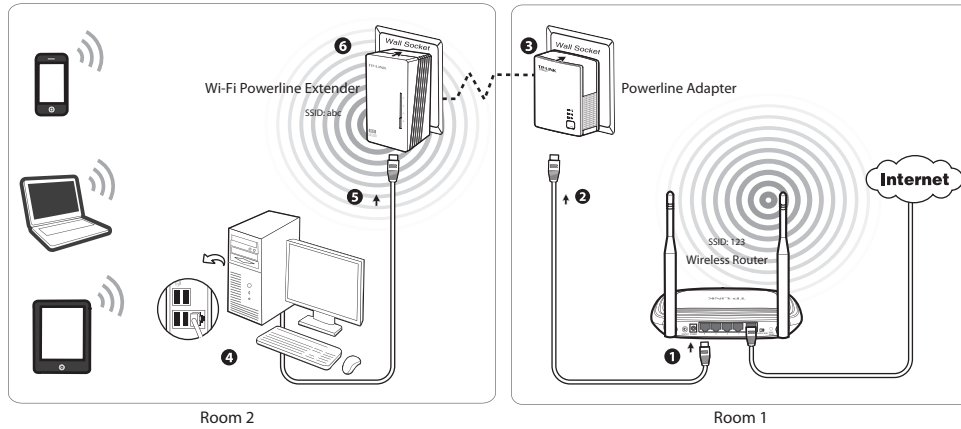
If your router does not support WPS function, or you just want to use a separate wireless network, follow the steps below. Before proceeding, please write down the SSID and Wireless Password of your Wi-Fi Powerline Extender labeled on the bottom of the product.



SSID\*: TP-LINK\_

Wireless Password: \_\_\_\_\_

\*The default SSID is TP-LINK\_XXXXXX.  
(XXXXXX indicates the last six unique characters of WLAN MAC address.)



TP-LINK powerline devices are Plug and Play. After going through the steps above, wireless clients can use the default SSID and wireless password to join the wireless network of the Wi-Fi Powerline Extender as well as access the Internet.

If you want to change the SSID and wireless password, please refer to the User Guide included on the Resource CD.

## Pair Button

You can use the Pair button on only two devices at a time.

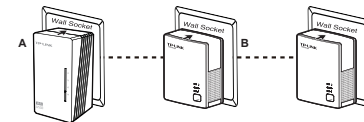
To create a powerline network using the Pair button, follow the steps below.

1. Press and hold the Pair button of A (TL-WPA4220) for one second.
2. Within two minutes, press and hold the Pair button of B (another TL-WPA4220 or another powerline adapter like TL-PA4010) for one second. The connection will then be established.



To join an existing powerline network, follow the steps below.

1. Press and hold the Pair button of C (another powerline device) for one second.
2. Within two minutes, press and hold the Pair button of A or B for one second. The connection will then be established.



To leave an existing powerline network, press and hold the pair button on the extender for at least ten seconds.

For more information about the Pair button, please refer to the User Guide included on the Resource CD.

## Troubleshooting

### The Powerline LED does not light up.

Check the following:

1. Double-click Powerline Scan.exe included on the Resource CD and click the "Rescan" button. The Management Utility will automatically detect all other Powerline devices on your powerline network.
2. Try to plug another powerline Ethernet adapter into a nearby power outlet and check whether the Powerline LED lights up or not.
3. Make sure that the device is plugged into a wall socket instead of a power strip.
4. Follow the method in **Pair Button** to establish the connection again.
5. Reset the device to its factory default values.

Contact your local dealer for technical support if the Powerline LED still fails to light up.

## Technical Support

- For more troubleshooting help, go to: <http://www.tp-link.com/en/support/faq>
- To download the latest Firmware, Driver, Utility and User Guide, go to: <http://www.tp-link.com/en/support/download>
- For all other technical support, please contact us by using the following details:

### Global

Tel: +86 755 2650 4400  
E-mail: [support@tp-link.com](mailto:support@tp-link.com)  
Service time: 24hrs, 7 days a week

### UK

Tel: +44 (0) 845 147 0017  
E-mail: [support.uk@tp-link.com](mailto:support.uk@tp-link.com)  
Service time: 24hrs, 7 days a week

### Turkey

Tel: 0850 7244 488 (Turkish Service)  
E-mail: [support.tr@tp-link.com](mailto:support.tr@tp-link.com)  
Service time: 09:00 to 21:00  
7 days a week

### Ukraine

Tel: 0800 505 508  
E-mail: [support.ua@tp-link.com](mailto:support.ua@tp-link.com)  
Service time: Monday to Friday  
10:00 to 22:00

### Brazil

Toll Free: 0800 608 9799  
(Portuguese Service)  
E-mail: [suporte.br@tp-link.com](mailto:suporte.br@tp-link.com)  
Service time: Monday to Friday,  
09:00 to 20:00; Saturday, 09:00 to  
15:00

### Indonesia

Tel: (+62) 021 6386 1936  
E-mail: [support.id@tp-link.com](mailto:support.id@tp-link.com)  
Service time: Monday to Friday  
09:00 to 18:00 \*Except public  
holidays

### Australia/New Zealand

Tel: AU 1300 87 5465  
NZ 0800 87 5465  
E-mail: [support.au@tp-link.com](mailto:support.au@tp-link.com)  
(Australia)  
[support.nz@tp-link.com](mailto:support.nz@tp-link.com) (New  
Zealand)  
Service time: 24hrs, 7 days a week

### Germany/Austria

Tel: +49 1805 875 465 (German  
Service)  
+49 1805 TPLINK  
+43 820 820 360  
E-mail: [support.de@tp-link.com](mailto:support.de@tp-link.com)  
Fee: 0.14 EUR/min from the German  
fixed phone network and up to 0.42  
EUR/min from mobile phone  
Service time: Monday to Friday,  
09:00 to 12:30 and 13:30 to 17:30.  
GMT+1 or GMT+2 (Daylight Saving  
Time in Germany)  
\*Except bank holidays in Hesse

### Singapore

Tel: +65 6284 0493  
E-mail: [support.sg@tp-link.com](mailto:support.sg@tp-link.com)  
Service time: 24hrs, 7 days a week

### USA/Canada

Toll Free: +1 866 225 8139  
E-mail: [support.usa@tp-link.com](mailto:support.usa@tp-link.com)  
Service time: 24hrs, 7 days a week

### Italy

Tel: +39 023 051 9020  
E-mail: [support.it@tp-link.com](mailto:support.it@tp-link.com)  
Service time: Monday to Friday  
09:00 to 13:00; 14:00 to 18:00

### Malaysia

Tel: 1300 88 875 465  
Email: [support.my@tp-link.com](mailto:support.my@tp-link.com)  
Service time: 24hrs, 7 days a week

### Poland

Tel: +48 (0) 801 080 618 / +48 223  
606 363 (if calls from mobile phone)  
E-mail: [support.pl@tp-link.com](mailto:support.pl@tp-link.com)  
Service time: Monday to Friday,  
09:00 to 17:00. GMT+1 or GMT+2  
(Daylight Saving Time)

### France

Tel: +33 (0) 820 800 860 (French  
service)  
Email: [support.fr@tp-link.com](mailto:support.fr@tp-link.com)  
Fee: 0.118 EUR/min from France  
Service time: Monday to Friday,  
09:00 to 18:00 \*Except French Bank  
holidays

### Switzerland

Tel: +41 (0) 848 800 998 (German  
Service)  
E-mail: [support.ch@tp-link.com](mailto:support.ch@tp-link.com)  
Fee: 4-8 Rp/min, depending on rate  
of different time  
Service time: Monday to Friday,  
09:00 to 12:30 and 13:30 to 17:30.  
GMT+1 or GMT+2 (Daylight Saving  
Time)

### Russian Federation

Tel: 8 (499) 754 5560  
8 (800) 250 5560 (toll-free call from  
any RF region)  
E-mail: [support.ru@tp-link.com](mailto:support.ru@tp-link.com)  
Service time: From 10:00 to 18:00  
(Moscow time) \*Except weekends  
and holidays in Russian Federation