

Product Highlights

Gigabit Ethernet Speed

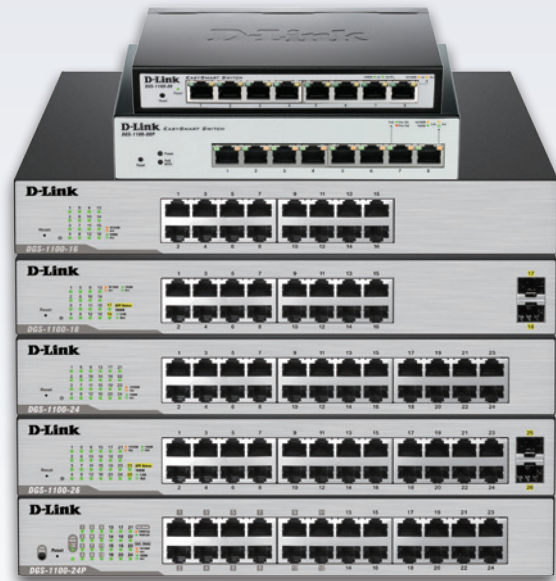
High-speed ports provide Gigabit Ethernet technology while remaining backward compatible for connections to older computers and equipment

Revolutionary Energy Efficiency

Innovative D-Link Green features help conserve energy without affecting performance so you can reduce operating costs and protect the environment

Smart and Flexible Management

Powerful switch management functions can be performed through a web management interface or through the D-Link Network Assistant Utility



DGS-1100 Series

Gigabit Smart Switches

Features

Physical

- Various selection of port counts, with or without PoE and fibre support
- Fanless design for silent operation (excluding DGS-1100-24P)

Green Technology

- Link status detection
- LED and port shut-off
- System hibernation
- Time-based PoE (DGS-1100-24P only)

Advanced Features

- IGMP snooping
- Bandwidth control
- 802.1Q VLAN for traffic segregation
- Port-based VLAN
- 802.1p
- Auto Surveillance VLAN
- Voice VLAN

Easy Troubleshooting

- Loopback detection with auto disable
- Cable diagnostics

Management Features

- D-Link Network Assistant utility or web-based GUI
- Built-in SNMP MIB

D-Link's DGS-1100 Series provide an affordable solution for SOHOs and Small and Medium Businesses as well as enterprise deployment, such as in branch offices and meeting rooms that require simple network management. Each model comes in a compact desktop-sized metal case and features either 8, 16, 16+2 SFP, 24, 24+2 SFP, or 8 PoE and 24 with 12 PoE enabled Gigabit ports.

D-Link Green/Power Saving Performance

Compliant with IEEE802.3az Energy Efficient Ethernet, these switches consume less energy by cutting down on power consumption when port utilisation is low. By deploying EEE devices, users can cut operating costs and even cut down on necessary cooling equipment, helping small and medium-sized businesses stay within their budgets. The DGS-1100 Series also features D-Link Green Technology that helps automatically save energy. The switches monitor the link status of every port and will drastically reduce power consumption when a port link is down.

Easy to deploy

The DGS-1100 Series support an intuitive D-Link Network Assistant Utility and a web-based management interface. The D-Link Network Assistant Utility allows customers to discover all switches in the D-Link Smart Switch family within the same L2 network segment. With this utility, users do not need to change the IP address of their PC, and this also makes initial setup of the Smart Switches quick and easy. Switches within the same L2 network segment that are connected to the user's PC are displayed on-screen for instant access. This allows for extensive switch configuration and basic setup of discovered devices, including password changes and firmware upgrades. The graphic web-based management interface provides a user-friendly interface that enables network administrators to remotely control their network down to the port level.

QoS and Bandwidth Control

The DGS-1100 Series supports Auto Surveillance VLAN (ASV), and Auto Voice VLAN, which are best suited for VoIP and video surveillance deployments. Auto Surveillance VLAN consolidates data and surveillance video transmission through a single DGS-1100 Series switch, thus sparing businesses the expense of dedicated hardware and facilities. ASV also ensures the quality of real-time video for monitoring and control without compromising the transmission of conventional network data. The Auto Voice VLAN technology enhances the VoIP service by automatically placing voice traffic from an IP phone to an assigned VLAN. With higher priority and individual VLAN, these features guarantee the quality and security of VoIP traffic. Bandwidth Control can reserve bandwidth on a per port basis for important functions that require larger bandwidth or might have high priority.

PoE Support

The DGS-1100-08P and DGS-1100-24P delivers Power over Ethernet (PoE) capabilities, making deployment with IP cameras, VoIP phones, and access points much easier. Power cords will become a thing of the past, as the DGS-1100-08P complies with the 802.3af standard for PoE and supports a 64 Watt power budget whereas the DGS-1100-24P complies with the 802.3af/802.3at standard for PoE and supports a 100 Watt power budget. The 10/100/1000Base-T Ethernet ports mean that even high-quality video is no problem.

Easy Troubleshooting

The DGS-1100 Series feature Loopback Detection and Cable Diagnostics to help network administrators find and solve network problems quickly and easily. Loopback Detection is used to detect loops created by a specific port and automatically shut down the affected port. The Cable Diagnostics feature is designed for network administrators to quickly examine the quality of the copper cables, recognise the cable type, and detect cable errors.

Advanced Features

DGS-1100 Series is equipped with advanced security features such as Static MAC, Storm Control, and IGMP Snooping. Static MAC allows users to create a MAC whitelist for specific ports, helping administrators limit network access to authorised devices only. Storm Control monitors broadcast, multicast, or unknown unicast traffic and will start blocking or discarding packets which could flood the network when the defined threshold is exceeded. IGMP Snooping is able to reduce the loading of L3 multicast routers and save bandwidth in network throughput.



If the worst should happen to your network you need the very best support and fast. Downtime costs your business money. D-Link Assist maximises your uptime by solving technical problems quickly and effectively. Our highly trained technicians are on standby around the clock, ensuring that award-winning support is only a phone call away.

With a choice of three affordable service offerings covering all D-Link business products, you can select the package that suits you best:

D-Link Assist Gold - for comprehensive 24-hour support

D-Link Assist Gold is perfect for mission-critical environments where maximum uptime is a high priority. It guarantees four hour around-the-clock response. Cover applies 24/7 for every day of the year including holidays.

D-Link Assist Silver - for prompt same-day assistance

D-Link Assist Silver is designed for 'high availability' businesses that require rapid response within regular working hours. It provides a four hour response service Monday to Friday from 8am to 5pm, excluding holidays.

D-Link Assist Bronze - for guaranteed response on the next business day

D-Link Assist Bronze is a highly cost-effective support solution for less critical environments. Response is guaranteed within eight business hours Monday to Friday from 8am to 5pm, excluding holidays.

D-Link Assist can be purchased together with any D-Link business product. So whether you're buying switching, wireless, storage, security or IP Surveillance equipment from D-Link, your peace of mind is guaranteed. D-Link Assist also offers installation and configuration services to get your new hardware working quickly and correctly.

Technical Specifications

General	DGS-1100-08	DGS-1100-16 ²	DGS-1100-18 ²	DGS-1100-24 ²	DGS-1100-26 ²
Size	Desktop	11-inch Desktop/Rackmount Size, 1U Height			
Number of Ports	• 8 10/100/1000 Mbps	• 16 10/100/1000 Mbps	• 16 10/100/1000 Mbps • 2 SFP 1000 Mbps	• 24 10/100/1000 Mbps	• 24 10/100/1000 Mbps • 2 SFP 1000 Mbps
Port Functions	IEEE 802.3 compliant IEEE 802.3u compliant IEEE 802.3ab compliance Supports half/full-duplex operation (full/half at 10/100 Mbps, full at 1000 Mbps) Auto-negotiation Auto MDI/MDIX IEEE 802.3x Flow Control supports Full-Duplex mode IEEE 802.3az compliant				
Performance					
Switching Capacity	16 Gbps	32 Gbps	36 Gbps	48 Gbps	52 Gbps
Maximum Forwarding Rate	11.9 Mpps	23.81 Mpps	26.79 Mpps	35.71 Mpps	38.69 Mpps
MAC Address Table Size	8K Entries	8K Entries	16K Entries	8K Entries	16K Entries
Packet Buffer	2 Mbits	512 Kbits	1.5 Mbits	512 Kbits	1.5 Mbits
Flash Memory	2 Mbyte	8 Mbyte			
LEDs					
Power (per device)	✓	✓	✓	✓	✓
Link/Activity/Speed (per port)	✓	✓	✓	✓	✓
Power Consumption					
Maximum	4.89 watts	9.31 watts	14.88 watts	13.94 watts	19.04 watts
Physical					
Power Input	100 to 240 V AC 50 to 60 Hz External Power Adapter	100 to 240 V AC 50 to 60 Hz Internal Power Supply			
MTBF	503,585 hours	2,827,541 hours	2,671,256 hours	2,406,109 hours	2,277,645 hours
Acoustics	0 dB(A)				
Heat Dissipation	16.68 BTU/hr	31.77 BTU/hr	50.77 BTU/hr	47.57 BTU/hr	64.97 BTU/hr
Weight	0.42 kg (0.925 lbs)	1.53 kg (3.37 lbs)	1.56 kg (3.44 lbs)	1.63 kg (3.59 lbs)	1.66 kg (3.66 lbs)
Dimensions	171 x 98 x 28 mm (6.7 x 3.85 x 1.1 inches)	280x 180x 44 mm (11.02 x 7.08 x 1.73 inches)	280x 180x 44 mm (11.02 x 7.08 x 1.73 inches)	280x 180x 44 mm (11.02 x 7.08 x 1.73 inches)	280x 180x 44 mm (11.02 x 7.08 x 1.73 inches)
Ventilation	Fanless				
Operating Temperature	0 to 40 °C (32 to 104 °F)	-5 to 50 °C (23 to 122 °F)			
Storage Temperature	-10 to 70 °C (14 to 158 °F)	-40 to 70 °C (-40 to 158 °F)			
Operating Humidity	10% to 95% non-condensing	0% to 95% non-condensing			
Storage Humidity	5% to 95% non-condensing	0% to 95% non-condensing			
EMI	FCC Class A, CE Class A, VCCI Class A, C-Tick, ICES-003 ¹ , BSMI ² , CCC ²				
Safety	cUL, CE LVD, CB ² , BSMI ² , CCC ²				

Technical Specifications

General	DGS-1100-08P	DGS-1100-24P
Size	Desktop	11-inch Desktop/Rackmount Size, 1U Height
Number of Ports	• 8 10/100/1000 Mbps (Ports 1 to 8 are PoE enabled)	• 24 10/100/1000 Mbps (Ports 1 to 12 are PoE enabled)
Port Functions	IEEE 802.3 compliant IEEE 802.3u compliant IEEE 802.3ab compliance IEEE802.3af (DGS-1100-08P)/IEEE802.3af/802.3at (DGS-1100-24P) Supports half/full-duplex operation (full/half at 10/100 Mbps, full at 1000 Mbps) Auto-negotiation Auto MDI/MDIX IEEE 802.3x Flow Control supports Full-Duplex mode IEEE 802.3az compliant	
Performance		
Switching Capacity	16 Gbps	48 Gbps
Maximum Forwarding Rate	11.9 Mpps	35.71 Mpps
MAC Address Table Size	8K Entries	
Packet Buffer	2 Mbits	512 Kbits
Flash Memory	2 Mbyte	8 Mbyte
PoE		
PoE Standard	802.3af	802.3af/802.3at
PoE Capable Ports	Port 1 to 8	Port 1 to 12
PoE Power Budget	64 W	100 W
LEDs		
Power (per device)	✓	✓
Link/Activity/Speed (per port)	✓	✓
Power Consumption		
Maximum	78.8 watts (PoE on)	128.32 watts (PoE on)
Physical		
Power Input	100 to 240 V AC 50 to 60 Hz External Power Supply	100 to 240 V AC 50 to 60 Hz Internal Power Supply
MTBF	708,219 hours	563,292 hours
Acoustics	0 dB(A)	44.5 dB(A)
Heat Dissipation	268.87 BTU/hr	437.85 BTU/hr
Weight	0.706 kg (1.553 pounds)	2.15 kg (4.74 lbs)
Dimensions	190 x 120 x 38 mm (7.4 x 4.7 x 1.1 inches)	280x 230x 44 mm (11.02 x 9.05 x 1.73 inches)
Ventilation	Fanless	1 Fan
Operating Temperature	0 to 40 °C (32 to 104 °F)	-5 to 50 °C (23 to 122 °F)
Storage Temperature	-10 to 70 °C (14 to 158 °F)	-40 to 70 °C (-40 to 158 °F)
Operating Humidity	10% to 95% non-condensing	0% to 95% non-condensing
Storage Humidity	5% to 95% non-condensing	0% to 95% non-condensing
EMI	FCC Class A, CE Class A, VCCI Class A, C-Tick, ICES-003 ¹ , BSMI ² , CCC ²	
Safety	cUL, CE LVD, CB ² , BSMI ² , CCC ²	

DGS-1100 Series Gigabit Smart Switches

Software Features²

VLAN	<ul style="list-style-type: none"> • Port-based VLAN • 802.1Q Tagged VLAN • Auto Surveillance VLAN • Voice VLAN • Management VLAN 	<ul style="list-style-type: none"> • Asymmetric VLAN • VLAN Group <ul style="list-style-type: none"> • Supports 128 static VLAN groups • Max. 4094 VIDs
L2 Features	<ul style="list-style-type: none"> • Flow Control <ul style="list-style-type: none"> • 802.3x Flow Control • HOL Blocking Prevention • Jumbo Frames up to 9216 Bytes • IGMP Snooping <ul style="list-style-type: none"> • IGMP v1/v2/v3² awareness Snooping • Supports 32¹/64² Groups • IGMP Snooping Querier² • Static Trunk¹: <ul style="list-style-type: none"> • DGS-1100-08/08P: 2 groups, 2-4 ports per group • 802.3ad Link Aggregation²: <ul style="list-style-type: none"> • DGS-1100-16: Support max 8 groups per device and 8 ports per group • DGS-1100-18: Support max 9 groups per device and 8 ports per group • DGS-1100-24P: Support max 12 groups per device and 8 ports per group • DGS-1100-26: Support max 13 groups per device and 8 ports per group 	<ul style="list-style-type: none"> • Loopback Detection • Cable Diagnostics • LLDP² • Port Mirroring <ul style="list-style-type: none"> • One-to-One • Many-to-One² • Statistics <ul style="list-style-type: none"> • Tx Ok • Tx Error • Rx Ok • Rx Error • Spanning Tree Protocol² <ul style="list-style-type: none"> • 802.1D STP • 802.1w RSTP
Quality of Service (QoS)	<ul style="list-style-type: none"> • 802.1p Quality of Service • 4 queues per port • Queue Handling <ul style="list-style-type: none"> • Strict • Weighted Round Robin (WRR) 	<ul style="list-style-type: none"> • Port-based Bandwidth Control (Rate Limiting) <ul style="list-style-type: none"> • Ingress : 8Kbps, Egress : 8¹/64²Kbps
Security	<ul style="list-style-type: none"> • D-Link Safeguard² • Traffic Segmentation² • Broadcast/Multicast/Unknown Unicast Storm Control 	<ul style="list-style-type: none"> • DoS Attack Prevention² • SSL²
Management	<ul style="list-style-type: none"> • Web-based GUI (Supports IPv4/IPv6²) 	<ul style="list-style-type: none"> • D-Link Network Assistant Utility
D-Link Green	<ul style="list-style-type: none"> • Power Saving by <ul style="list-style-type: none"> • Link Status • Cable Length 	<ul style="list-style-type: none"> • Compliant with IEEE 802.3az Energy Efficient Ethernet • Compliant with RoHS 6
RFC Standard List	<ul style="list-style-type: none"> • RFC 768 UDP • RFC 791 IP • RFC 792 ICMP • RFC 793 TCP • RFC 826 ARP 	<ul style="list-style-type: none"> • RFC 951 BootP Client • RFC 1542 BootP/DHCP client • RFC 1945 HTTP/1.0 • RFC 2647 802.1p • RFC 2236, 4451 IGMP Snooping

Optional SFP Transceivers

DEM-310GT	1000BASE-LX, single-mode, 10 km
DEM-311GT	1000BASE-SX, multi-mode, 550 m
DEM-312GT2	1000BASE-SX, multi-mode, 2 km
DEM-314GT	1000BASE-LHX, single-mode, 50 km

¹ For DGS-1100-08/08P only

² For DGS-1100-16/24/24P/26 hardware revision B1 only



For more information: www.dlink.com

D-Link European Headquarters. D-Link (Europe) Ltd., D-Link House, Abbey Road, Park Royal, London, NW10 7BX. Specifications are subject to change without notice. D-Link is a registered trademark of D-Link Corporation and its overseas subsidiaries. All other trademarks belong to their respective owners. ©2014 D-Link Corporation. All rights reserved. E&OE.

Updated November 2014

D-Link[®]
Building Networks for People