



Quick Start Guide



Cisco Small Business Models PVC2300 and WVC2300 Internet Video Camera with Audio

Package Contents

- 2300 Series Camera
- Stand Kit
- Power Supply (12V 1A)
- 6-Foot Ethernet Cable
- Lens Adapter Ring
- Allen Wrench
- Antenna (WVC2300)
- Setup and Documentation CD-ROM

1 Before You Begin

- To configure the Cisco PVC2300 and WVC2300 cameras, you need at least one computer with an active LAN IP connection.
- You must perform the initial configuration of the Cisco WVC2300 camera from a personal computer connected to the camera using a wired connection to the Ethernet port. The initial configuration cannot be performed over a wireless connection.

Once the hardware installation is complete, Cisco strongly recommends that you run the Setup Wizard on the Setup CD-ROM for first-time software installation of the camera. Advanced users can set up the Cisco PVC2300 and WVC2300 cameras directly from the web interface of the camera.

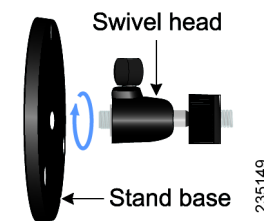
2 Camera Installation

Follow these steps to install the camera.

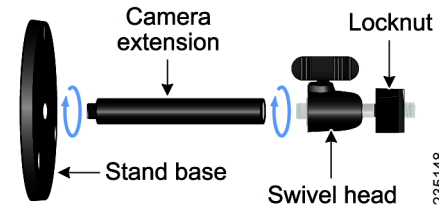
STEP 1 (Optional) Attach the base of the camera stand to a permanent location by using the three included screws.

STEP 2 Assemble the camera stand in one of the following ways:

- Attach the swivel head directly to the stand base.



- If an extension is necessary, attach the camera extension to the stand base and then attach the swivel head to the extension.

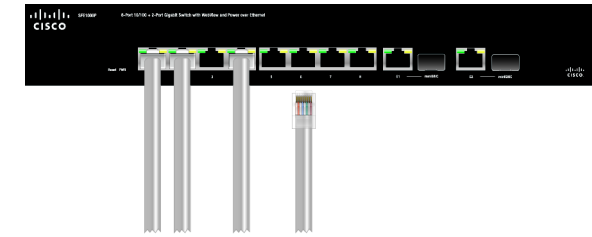


STEP 3 Connect the camera stand to the bottom of the camera.

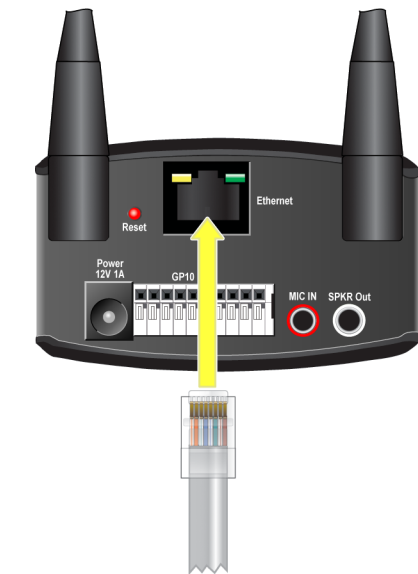


STEP 4 Adjust the camera to the appropriate viewing position and secure the camera in place by tightening the locknut.

STEP 5 Connect the included Ethernet network cable to your network router or switch.

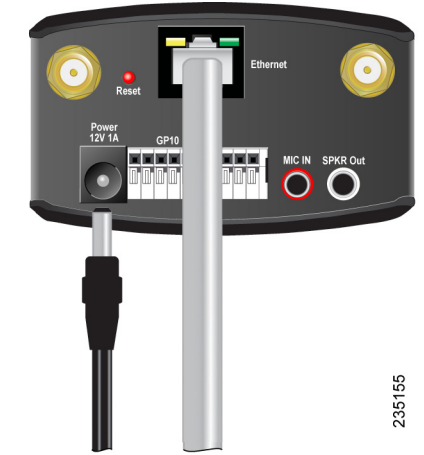


STEP 6 Connect the other end of the cable to the camera Ethernet port.



NOTE If your network switch provides Power over Ethernet (PoE), proceed to step 8. The PoE function applies to the PVC2300 camera only.

STEP 7 If your network switch does not provide PoE, connect the included power adapter to the camera's Power port and plug the other end into a standard electrical outlet.



STEP 8 Verify that the camera LEDs are lit.



The PVC2300 and WVC2300 cameras have two LEDs to let you know how the camera is functioning.

LED	Color	Activity	Action
Ready	Amber	Off	Camera is powered off.
		On	Camera is powered on.
		Blink	Camera is booting.
Network	Green	Off	Network connection not detected.
		On	Network connection detected.
		Blink	Sending and receiving data.

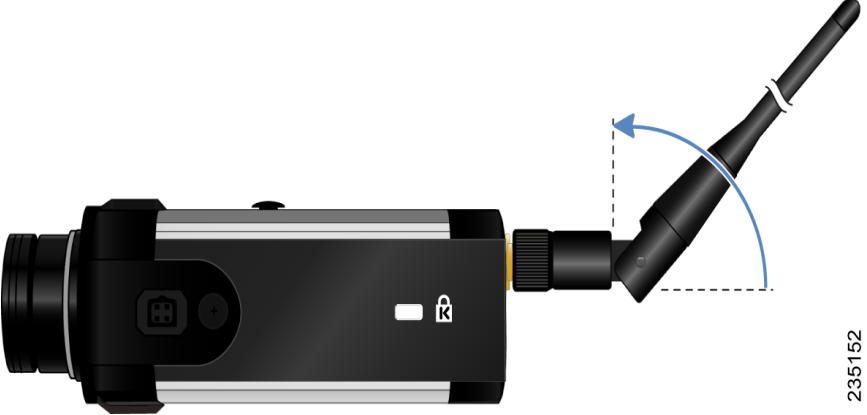
STEP 9 (Optional) If the Cisco PVC2300 or WVC2300 camera is not functioning correctly, you can press the Reset button to reset the camera. The Reset button is found next to the Ethernet port. Insert a paper clip into the opening and hold it in for twelve seconds. Be aware that resetting the camera will erase all of your settings and return the camera to factory defaults.

NOTE If you are installing the PVC2300 camera, you are done with the camera installation. However, if you are installing the WVC2300 camera, proceed to the next step.

STEP 10 Connect each of the two antennas to the antenna connectors on the back of the camera.



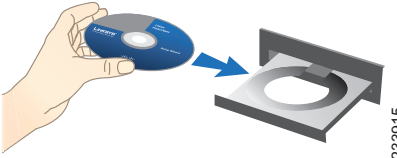
STEP 11 Place the antennas in an upright position.



3 Configuration

Follow these steps to configure your camera.

STEP 1 Insert the Setup CD into the CD-ROM drive of your PC. If the CD doesn't run automatically, go to My Computer and click on the CD-ROM drive to launch the application.



STEP 2 When the Setup screen appears, click the **Start** button.



STEP 3 Follow the Setup Wizard instructions to configure the Cisco PVC2300 and WVC2300 cameras.

- TIPS**
- Refer to the complete instructions found in the *Cisco PVC2300 and WVC2300 Internet Video Camera with Audio Administration Guide* at the following location: http://www.cisco.com/en/US/products/ps9944/prod_maintenance_guides_list.html.
 - As you go through the configuration, the default user name and password is **admin**. Type **admin** in lowercase letters in the User name and Password fields when prompted, then click **OK**.
 - If the Setup Wizard does not find your Cisco PVC2300 or WVC2300 camera, you need to enable UPnP on your computer. Instructions on how to enable UPnP are found in the *Cisco PVC2300 and WVC2300 Internet Video Camera with Audio Administration Guide*. http://www.cisco.com/en/US/products/ps9944/prod_maintenance_guides_list.html.

4 Wired and Wireless Modes

NOTE This section applies to the Cisco WVC2300 camera.

After the initial configuration, you can use the camera in one of two modes: wired or wireless. You cannot use the camera in both modes simultaneously.

To switch between wired and wireless modes, power cycle the camera with an Ethernet cable attached for a wired solution, or power cycle the camera without an Ethernet cable attached for a wireless solution.

Verify the mode you are in by viewing the LEDs. Unplugging the Ethernet cable does not automatically switch the camera to wireless mode.

5 Adjusting the Lens

The Cisco Small Business Internet Video Camera uses an adjustable CS mount lens.

Adjust the focus by slowly rotating the camera Lens Focus clockwise or counterclockwise.

NOTE The resolution and video quality can be adjusted from the Audio/Video > Video window in the web-based utility. Use the camera Lens Focus to fine tune the image.

6 Where to Go from Here

Resource	Location
Product Information	www.cisco.com/go/surveillance
Technical Documentation	http://www.cisco.com/en/US/products/ps9944/tsd_products_support_series_home.html
Customer Support	www.cisco.com/en/US/support/tsd_cisco_small_business_support_center_contacts.html
Open Source License Notices	www.cisco.com/go/osln
Regulatory Compliance and Safety Information	www.cisco.com/en/US/products/ps9944/tsd_products_support_series_home.html
Warranty Information	www.cisco.com/go/warranty
Cisco Partner Central site for Small Business	www.cisco.com/web/partners/sell/smb

Americas Headquarters
 Cisco Systems, Inc.
 170 West Tasman Drive
 San Jose, CA 95134-1706
 USA
<http://www.cisco.com>
 Tel: 408 526-4000
 800 553-NETS (6387)
 Fax: 408 527-0883



Cisco, Cisco Systems, the Cisco logo, and the Cisco Systems logo are registered trademarks or trademarks of Cisco Systems, Inc. and/or its affiliates in the United States and certain other countries. All other trademarks mentioned in this document or Website are the property of their respective owners. The use of the word partner does not imply a partnership relationship between Cisco and any other company. (0705R)

© 2009 Cisco Systems, Inc. All rights reserved.
 ♻️ Printed in the USA on recycled paper containing 10% postconsumer waste.